



Lyn Valley Conservation Area

FRONTENAC ARCH BIOSPHERE HIKING TRAIL GUIDE

About The Trail

Lyn Valley Conservation Area is the Cataraqui Region Conservation Authority's (CRCA) smallest but one of the busiest Conservation Areas. At just 11 hectares in size, it boasts a great swimming area and a scenic hiking trail winding through the eastern part of the property. The site was a former gravel and sand pit which supplied fill for construction projects as far back as the late 1880's. The Canadian National Brockville – Westport Railroad, 401 freeway and Highway 2 are just a few of the projects to receive gravel from the pit. In 1973, the property was purchased by the CRCA from the Elizabethtown Township.

Site improvements have led to this once industrial site becoming a family friendly recreation spot which includes

- a spring-fed swimming lake and beach
- picnic area
- change and washrooms
- 1 km hiking trail.

While the trail is not marked, it is wide and well groomed making it an easy hike for the whole family.

KEY FACTS

Distance: 1 km

Difficulty: Easy

Other key facts: Family Friendly



Plan Your Trip

The Lyn Valley Conservation Area is located in the village of Lyn, northwest of Brockville. The entrance and parking area is on Hallecks Road 44.576499, -75.775399

7:30 a.m. to dusk daily.

The trail is open year round but CRCA does not maintain it during the winter. Local residents use the trail for snowmobiling.



This project has been made possible by the generous support of our partners.



The Frontenac Arch Biosphere belongs to the world network of UNESCO Biosphere Reserves. The Frontenac Arch Biosphere Network's mission is to encourage people to work together toward a sustainable community. Enough for all, for all time.

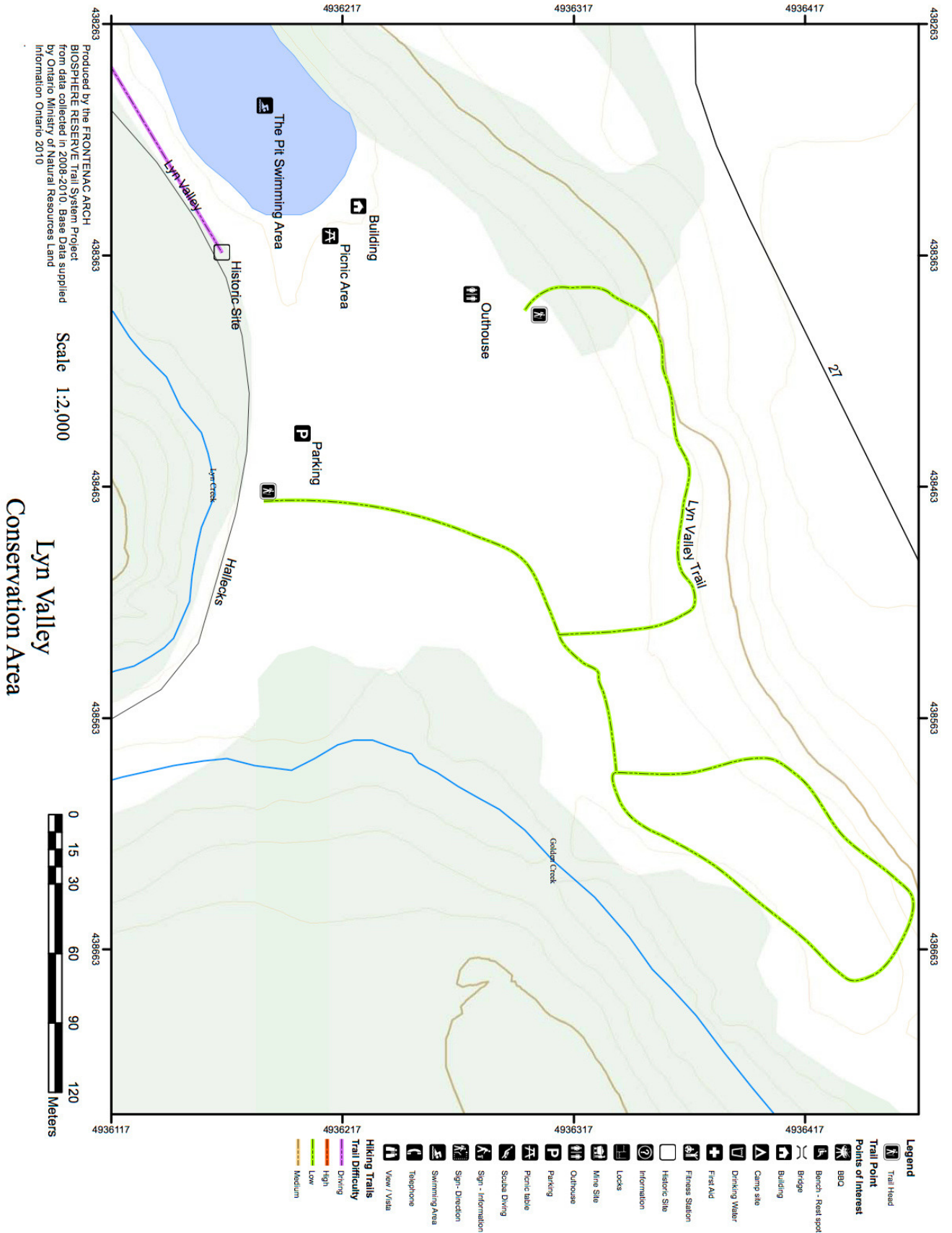
frontenacarchbiosphere.ca

fabexperiences.ca

Frontenac Arch Biosphere



FRONTENAC ARCH BIOSPHERE HIKING TRAIL GUIDE



Take nothing but pictures, leave nothing but footprints